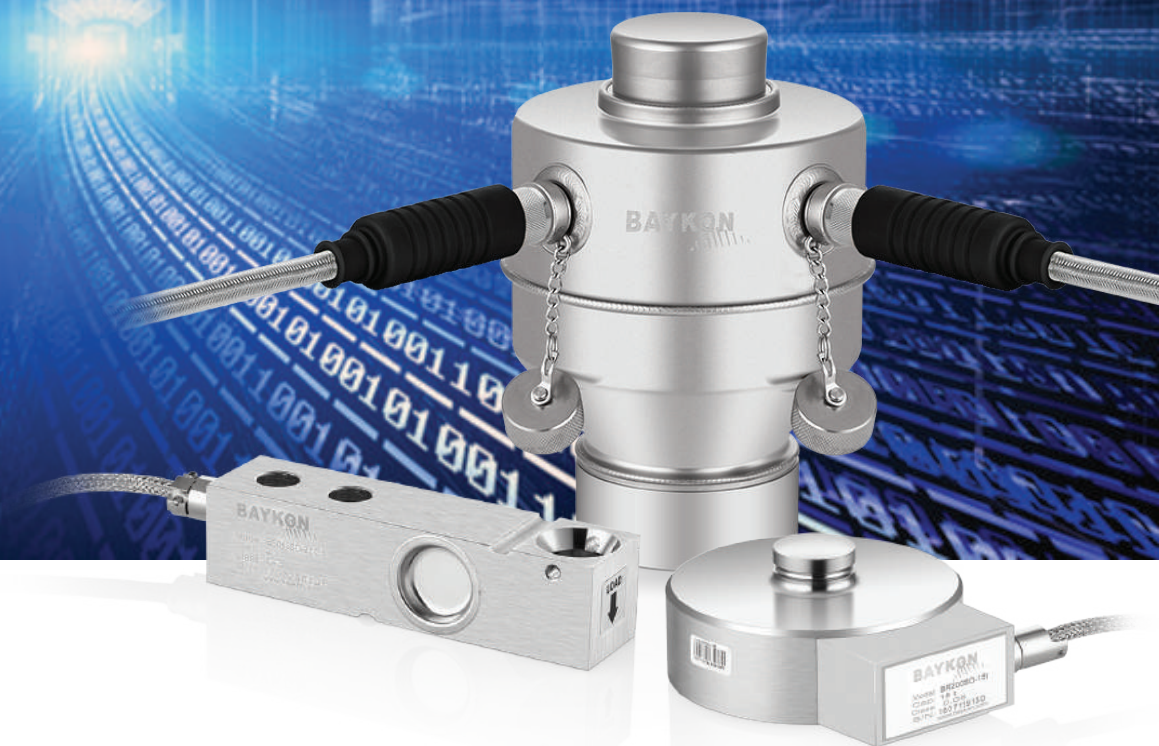




# New Generation Weighing Technology

Extreme Accuracy  
More Reliable & Durable  
Simplify & Fast Maintenance



## Digital Load Cells

**BAYKON**  
Industrial Weighing Systems



# Fast maintenance, more precision, higher confidence...



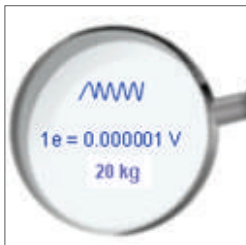
BAYKON new generation digital load cells are designed for quick maintenance, more precision, higher confidence in weighing applications. They have high protection structures and intelligent microprocessors integrated into them and represent the latest in weighing technology, high accuracy and reliability along. With its stainless steel, IP68 hermetically sealed enclosure, it can be used safely in harsh environments.

BAYKON digital load cells; eliminate possible errors which can occur with standard analogue load cell scales such as temperature, nonlinearity, hysteresis, electromagnetic effects and voltage variation. Weighing is blocked in case of load cell is broken.

Its advanced electronic design provide high resolution and long term stable digital output signal for accurate and reliable measurement. BAYKON digital load cells are matched at the production which provides direct replacement without calibration with test weights for non-legal scales.



## Advantages



**Highest Accuracy**  
Higher sensitivity than analog load cells with In-built hybrid processor



**Rust & Corrosion**  
The fully welded stainless steel structure, hermetically sealed, IP68 protection class



**Heavy-duty And Water Resist Cables**  
Dual core cable, creates a protective shield protected by braided stainless steel sheathing



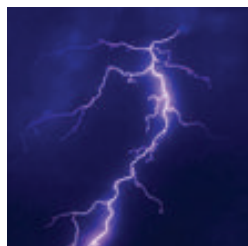
**Eliminated Spoiling Influences**  
Operation Temperature & Voltage variation, Radio and Electromagnetic effects



**Lowest Service Costs**  
Easy and quick fault finding, detects problems and simplifies service



**Electronic Calibration**  
No manual corner adjustment ( like trimpot, resistance etc. ) in junction box and high accuracy electronic calibration (without test weights)



**Lightning & Surge Voltage Protection**  
Standard use with LPK24 Protection & Power Supply Kit for 100-240VAC models



**Preventing Fraud & Cheating**  
Very difficult to cheat through secure digital BLDC RS 485 communication




**Quick Service**  
After load cell change, use without re-calibration for non-legal for trade scales



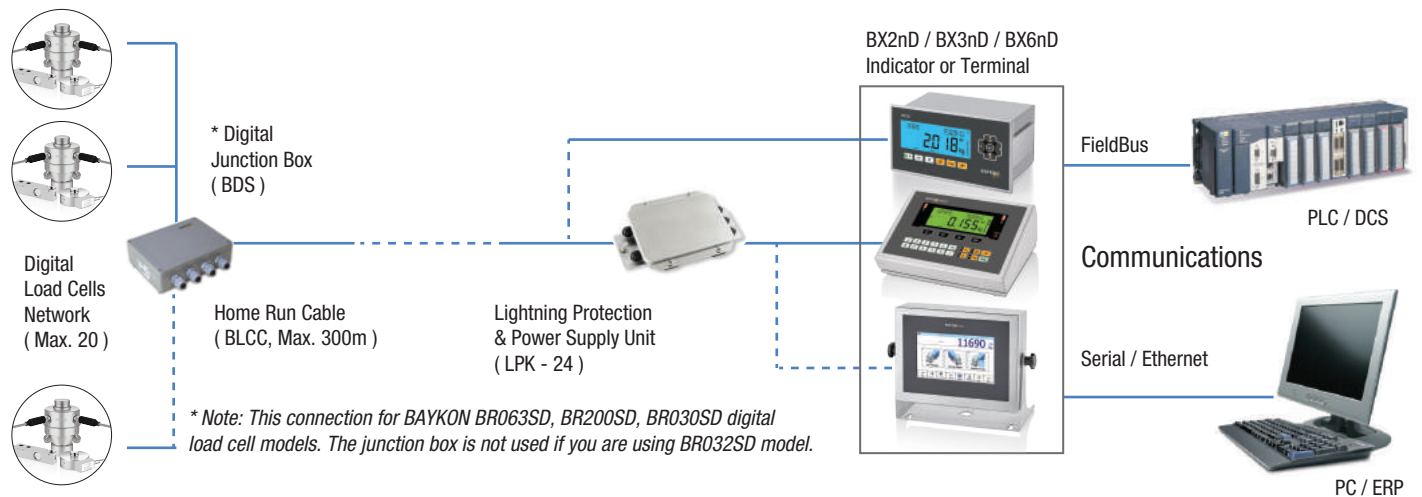
**Advanced Weighing Functions**  
Operates with intelligent European/OIML approved BAYKON weight indicator or terminals

# Technical Specifications

Model					
	Unit	BS063SD	BR200SD	BR110SD	BR030SD / BR032SD
Load Cell Type		Shear Beam	Button	Ring	Column
Max. capacity ( R.C. )	t	0.15 / 25 / 500 / 71 / 2 / 5	5 / 10 / 15	10 / 15 / 22 / 33 / 47 / 68 / 100 / 150 / 200 / 330	20 / 30 / 50 / 100
Accuracy class		G3 ( Non-Approved )			C3 ( OIML R60 )
Max. number of verification intervals ( nLC )		≥ 3000 ( Non-Approved )			5000
Min. load cell verification interval ( Y )		( Non-Approved )			10000
Internal resolution	Counts @ R.C.	≥ 1000000			
External resolution ( R0 )	Counts @ R.C.	≥ 50000			75000
External resolution tolerance	% R.C.	≤± 0.02			≤± 0.01
Zero balance	% R.C.	< ± 1			
Zero Return, 30 min.	ppm R.C.	< ± 250			± 180
Temperature effect ( zero )	ppm R.C./°C	< ± 250			< ±140
Temperature effect ( span )	ppm R.C./°C	< ± 30			< ± 14
Safe load limit	% R.C.	120			150
Ultimate load limit	% R.C.	250			300
Excitation, minimum	VDC				10
Excitation, recommended	VDC				12
Excitation, maximum	VDC				18
Compensated temperature range	°C	- 10 ... + 40			
Operating temperature range	°C	- 40 ... + 80			
Communication out		RS485, BLDC Protocol			
Number of bus addresses		24			
Material		Stainless Steel			
Protection		Complete hermetic sealing , IP68			
Cable type and diameter		Stainless Steel Armored - Diameter 8,5 mm			
Cable length	m	6	10		16 (BR030SD) , 7 w2C* (BR032SD)

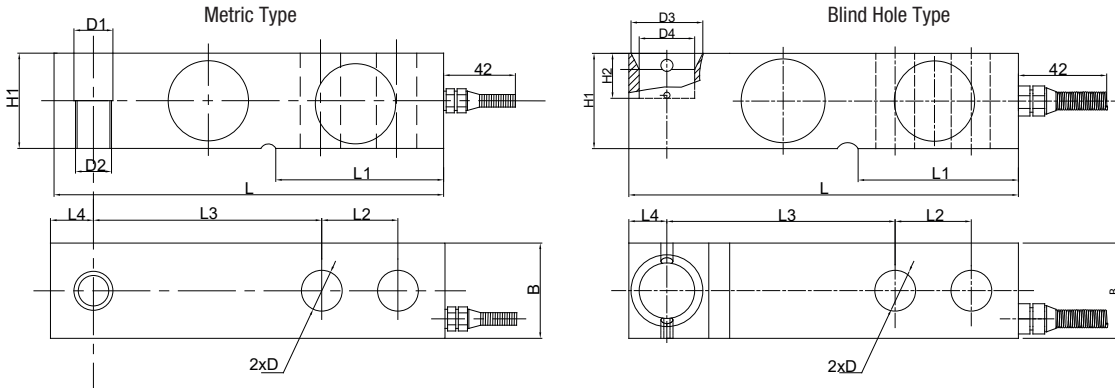
\* With two connector for serial network connection

# Typical Connections

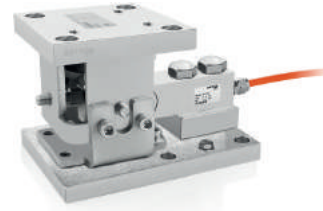


# Dimensions & Assemblies

## BS063SD / BS063SD-BH

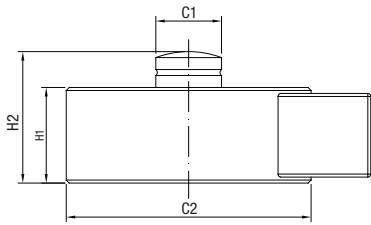


LEB Weigh Module  
(suggested)

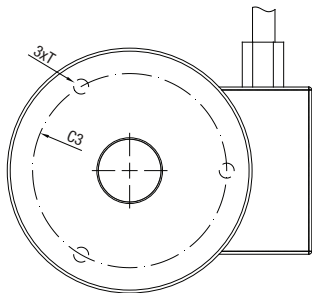
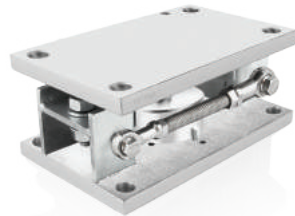


Capacity (t)	L	L1	L2	L3	L4	B	H1	H2	D	D1	D2	D3	D4
0.15 ~ 2	130	53.5	25.4	76.2	12.7	31.8	31.8	12	∅13	∅13.5	M12	∅24	∅18.5
3 ~ 5	171.5	72.5	38.1	95.3	19	38.1	38.1	20	∅20	∅20	M18	∅35	∅25

## BR200SD

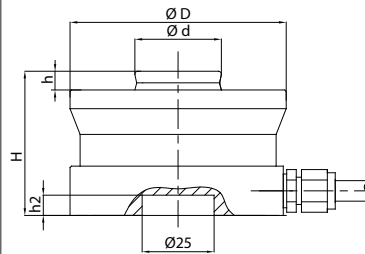


LAC Weigh Module  
(suggested)

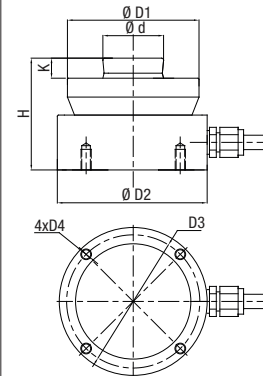


Cap. (t)	5-10 t	15 t
C1	22 mm	28 mm
C2	82 mm	100 mm
C3	65 mm	80 mm
H1	32 mm	35 mm
H2	44 mm	49.5 mm
T	M6 mm	M8 mm

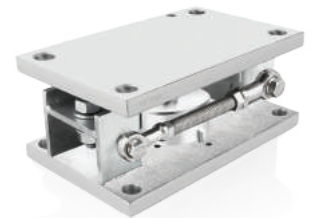
## BR110SD



Cap. (t)	D	d	H	h	h2
10, 15, 22	75	30	50	6.5	7
33	95	40	65	10	7
47	130	60	75	14	7
68	130	60	85	14	7
100	150	70	90	16	7
150	150	70	100	16	7
220	225	100	130	24	10
330	225	100	145	24	10
470	270	120	170	28	10

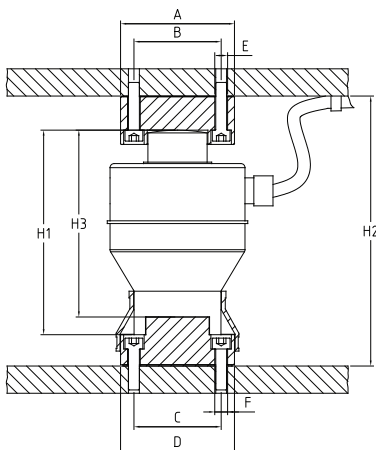


Cap. (t)	1t-4.7t
D1	∅50
D2	∅60
d	∅20
K	7.5
H	43
D3	53
D4	M5



LAC Weigh Module (suggested)  
(Up to 47 ton)

## BR030SD / BR032SD



Capacity (t)	20 / 30 / 50	100
(mm)		
A	∅83.5	∅89
B	64	-*
C	64	64
D	∅83.5	∅89
E	∅9.4	-*
F	∅9.4	∅10.5
H1	150	188
H2	200	280
H3	140	-

\* No holes for 100 t capacity

Assembly with accessories (standard)

