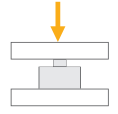


BY802

Tension / Compression Force Sensor



Applications



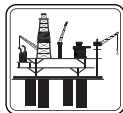
Truck Scales



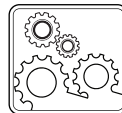
Tank, Bunker,
Silo Weighing



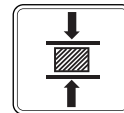
High Capacity
Applications



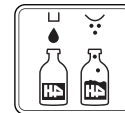
Special
Weighing



Industrial
Processes



Testing
Machines



Packing & Filling
Applications

Key Features

- Capacities: 100 kg~100 t
- Nickel plated alloy steel
- Protection class: IP67
- High accuracy

BY802 force measurement load cells are specifically designed and manufactured for the compression & tension test machines. They are made of special material for precise measurement. Depending on the application, they can be used with various

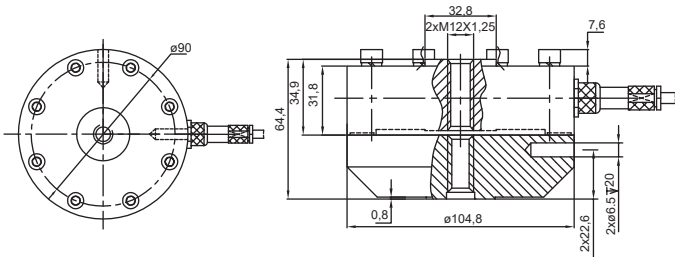
BAYKON electronic equipment; analog or digital transmitters, digital indicators and application software.

Technical Specifications

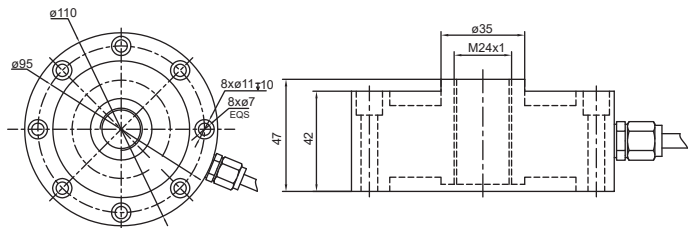
Model		BY802				
		S	M	L	XL	XXL
Capacity (E_{max})	t	0.1 / 0.25 / 0.5	1 / 2 / 5	10 / 20 / 30	50 / 60	100
Rated output (RO)	mV / V	2.0 ± 0.001			3.0 ± 0.006	
Combined error	%RO	≤ 0.03	≤ 0.1		≤ 0.2	≤ 0.05
Temperature effect on zero	%RO / 10°C	≤ 0.02			≤ 0.05	
Temperature effect on sensitivity	%RO / 10°C	≤ 0.02			≤ 0.05	
Safe load limit	% E_{max}	120				
Ultimate load	% E_{max}	150				
Zero balance	%RO	≤ 1				
Creep error (30 minutes)	%RO	≤ 0.03	≤ 0.05		≤ 0.08	
Excitation voltage, recommended	V (DC)	5 - 12				
Excitation voltage, maximum	V (DC)	15				
Input resistance	Ω	400 ± 10	760 ± 20			400 ± 10
Output resistance	Ω	352 ± 3	703 ± 5			702 ± 5
Insulation resistance (at 50 V DC)	MΩ	≥ 5000				
Compensated temperature range	°C	- 10...+ 40				
Operating temperature range	°C	- 30...+ 70				
Material		Nickel plated alloy steel				
Protection class		IP67				
Cable		Length: 6-10 m / diameter: 6 mm				

Dimensions (mm)

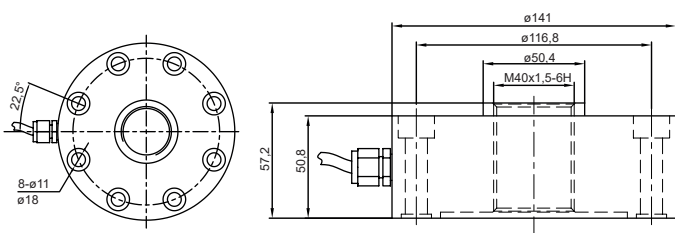
Model BY802 S - 100 / 250 / 500 kg



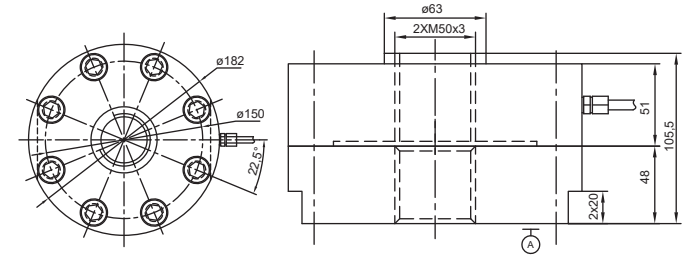
Model BY802 M - 1 / 2 / 5 t



Model BY802 L - 10 / 20 / 30 t



Model BY802 XL - 50 / 60 t



Model BY802 XXL - 100 t

