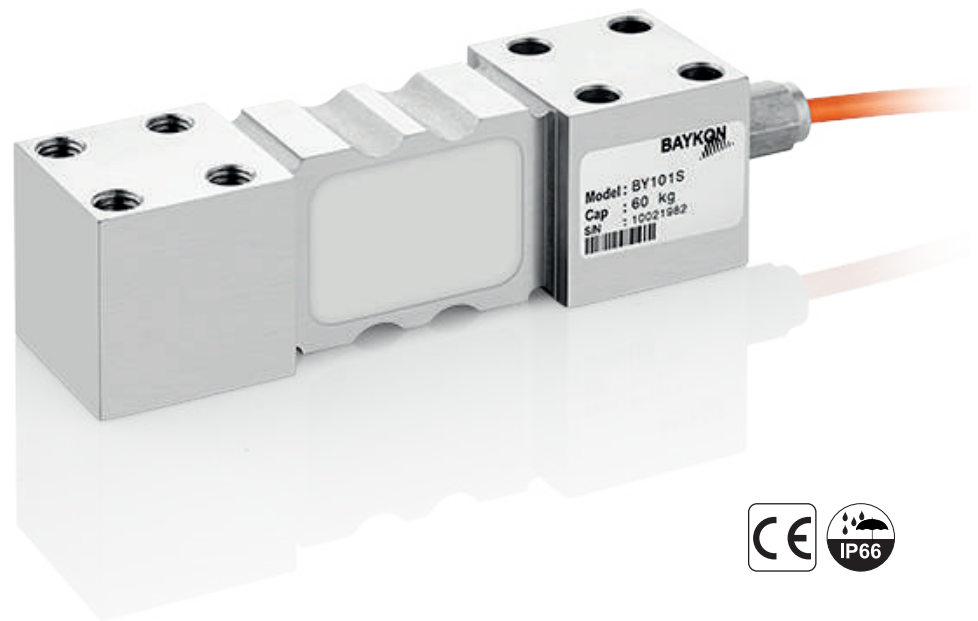
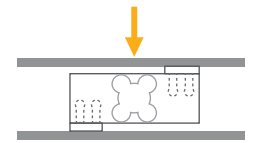


BY101S

Single Point Load Cell



Applications



Small Bench



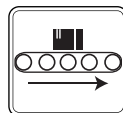
Large Bench



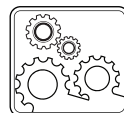
Checkweighers



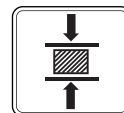
Tank, Bunker,
Silo Weighing



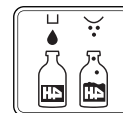
Conveyor
Scales



Industrial
Processes



Testing
Machines



Packing & Filling
Applications

Key Features

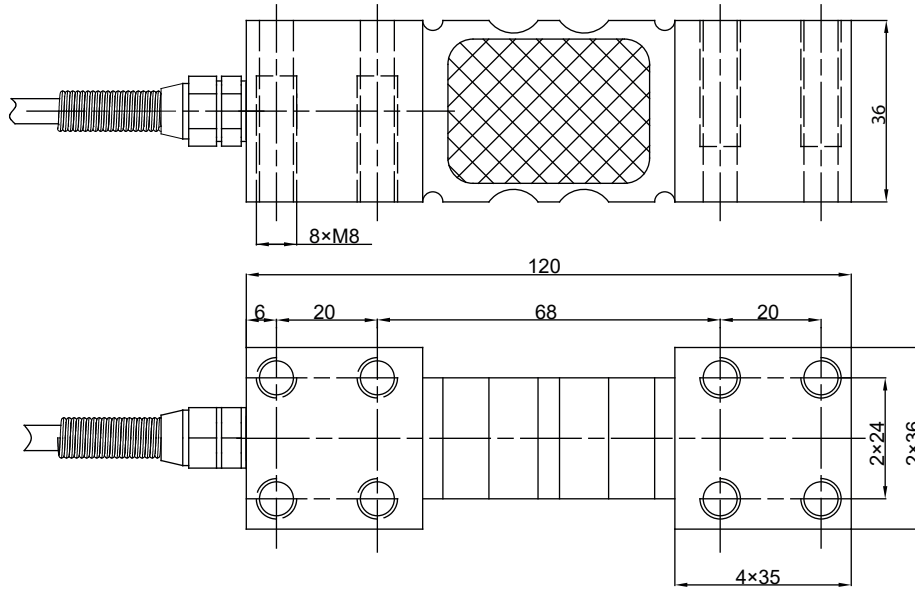
- Capacities: 30~300 kg
- Stainless steel
- Protection class: IP66
- High accuracy

BY101S is stainless steel adhesive sealed single point type loadcell with IP66 protection. It is suitable for bench scale, counting scale, packing machines and similar electronic weighing devices or testing machines.

Technical Specifications

Model		BY101S
Capacity (E_{max})	kg	30 / 60 / 100 / 150 / 200 / 300
Accuracy class		GP
Rated output (RO)	mV / V	2.0 ± 0.002
Temperature effect on zero	%RO / 10°C	≤ 0.02
Temperature effect on sensitivity	%RO / 10°C	≤ 0.02
Combined error	%RO	≤ 0.03
Safe load limit	% E_{max}	150
Ultimate load	% E_{max}	200
Zero balance	%RO	≤ 1
Excitation voltage, recommended	V (DC)	5 -12
Excitation voltage, maximum	V (DC)	15
Input resistance	Ω	400 ± 20
Output resistance	Ω	352 ± 3
Insulation resistance (at 50 V DC)	M Ω	≥ 5000
Operating temperature range	°C	- 30...+ 70
Material		Stainless steel
Protection class		IP66
Cable		Length: 3 m / diameter: 5 mm

Dimensions (mm)



Color Codes

Function	Colors
+ input	blue
+ output	white
- input	black
- output	red
shield	yellow