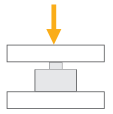


BR200S

Compression Load Cell



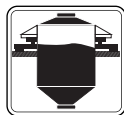
Applications



Explosive Atmospheres



Truck Scales



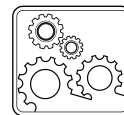
Tank, Bunker, Silo Weighing



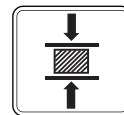
High Capacity Applications



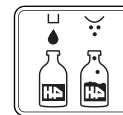
Special Weighing



Industrial Processes



Testing Machines



Packing & Filling Applications

Key Features

- Capacities; 5 ~ 50 t
- Stainless steel
- OIML R60 C3 approved
- ATEX approved (optional) Zone 0, 1, 2, 20, 21, 22
- Protection class: IP68
- Low profile


Type BR200S is OIML R60 C3 approved, low profile, high performance stainless steel ring torsion type load cell with complete IP68 hermetic sealing.

It has a wide capacity range from 5 t to 50 t perfectly fits for use in harsh industrial environments in food, chemical and allied process industries.

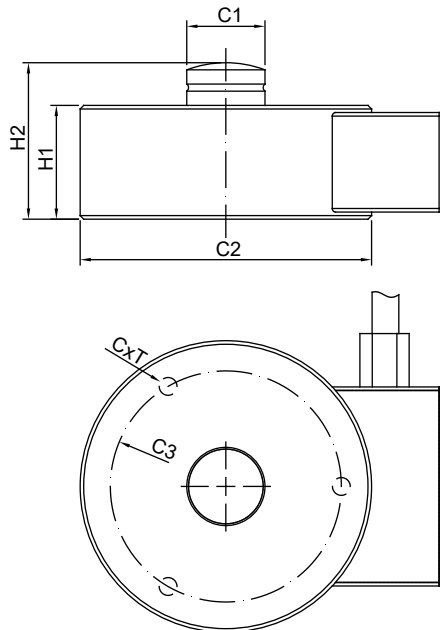
ATEX approved BR200S load cell is suitable for use in explosive environments.

BAYKON
Industrial Weighing Systems

Technical Specifications

Model	BR200S		
Capacity (E_{max})	t	2.5 / 5	10 / 15 / 20 / 30 / 50
Accuracy class according to OIML R60		G3	C3
Rated output (RO)	mV / V	2.0 ± 0.005	
Max. number of load cell verification intervals (n_{LC})		-	3000
Min. load cell verification interval (v_{min})		-	$E_{max}/8000$
Temperature effect on zero	%RO / 10°C	≤ 0.02	≤ 0.016
Temperature effect on sensitivity	%RO / 10°C	≤ 0.02	≤ 0.016
Combined error	%RO	≤ 0.03	≤ 0.017
Safe load limit	% E_{max}	150	
Ultimate load	% E_{max}	200	
Zero balance	%RO	≤ 1	
Creep error (30 minutes)	%RO	≤ 0.03	≤ 0.015
Excitation voltage, recommended	V (DC)	5 - 12	
Excitation voltage, maximum	V (DC)	15	
Input resistance	Ω	750 ± 20	
Output resistance	Ω	702 ± 3	
Insulation resistance (at 50 V DC)	MΩ	≥ 5000	
Compensated temperature range	°C	-10...+40	
Operating temperature range	°C	-30...+70	
ATEX Approval (Optional)		ATEX  II 1G Ex ia IIC T6 Ga II 1D Ex ia IIIC T82°C Da	
Material		Stainless Steel	
Protection class		IP68, Hermetically welded	
Cable		Length: 6 m / diameter: 5 mm	

Dimensions (mm)



Capacity	C1	C2	C3	H1	H2	T
5-10 t	22	82	65	32	44	M6
15-20 t	28	100	80	35	49.5	M8
30 t	35	126	90	50	64	M8
50 t	60	165	130	60	80	M16

Color Codes

Function	Colors
+ excitation	blue
- excitation	black
+ signal	white
- signal	red
shield	

W Modules

