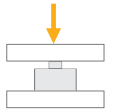


BR110 / BR110S

Compression Load Cells



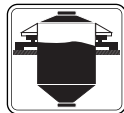
Applications



Explosive Atmospheres



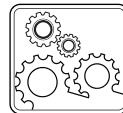
Truck Scales



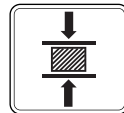
Tank, Bunker, Silo Weighing



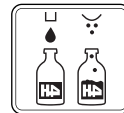
High Temperature Applications



Industrial Processes



Testing Machines



Packing & Filling Applications

Key Features


- Capacities: 1~470 t
- Nickel plated alloy steel / Stainless steel
- OIML R60 C3 approved (Stainless steel, 10 – 47 t)
- ATEX approved (optional) Zone 0, 1, 2, 20, 21, 22
- Protection class: IP68
- Model HT (optional) For environments up to 150 °C

BR110 and BR110S are compression-type load cells that are hermetically welded, IP68-protected and are designed for general weighing applications. They are available in alloy steel and stainless-steel versions. BR110S stainless steel version is EU OIML C3 approved in 10-47 t capacities. It can be used in high-capacity floor scales, tank scales, ship weighing and similar weighing applications. The BR110HT version is used extensively in weighing applications in high-temperature environments up to 150°C, especially in the steel industry.

ATEX approved BR110 / BR110S load cells are suitable for use in explosive environments.

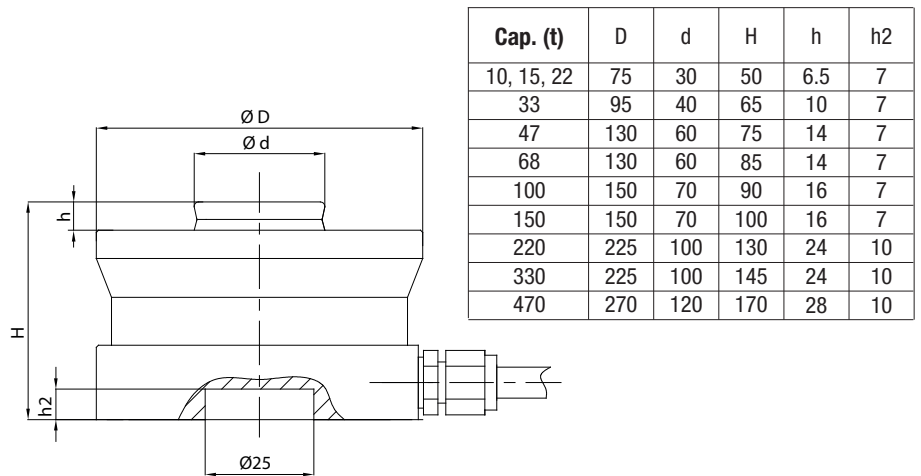
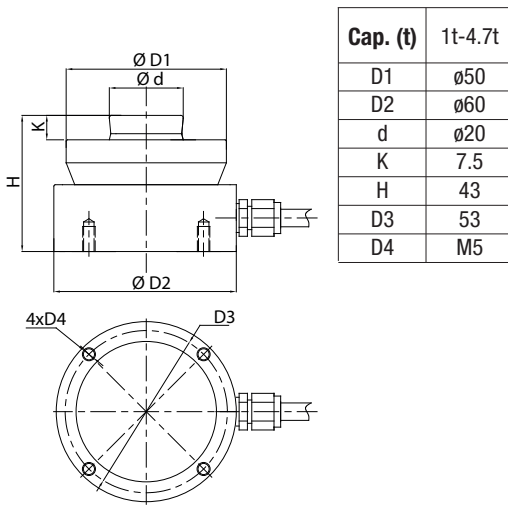
BAYKON
Industrial Weighing Systems

Technical Specifications

Model		BR110	BR110S
Capacity (E _{max})	t	1 / 2.2 / 3.3 / 4.7 / 10 / 15 / 22 / 33 / 47 / 68 / 100 / 150 / 220 / 330 / 470	1 / 2.2 / 3.3 / 4.7 / 68 / 100 / 150 / 220 / 330 / 470
Accuracy class according to OIML R60		G3	G3
Rated output (RO)	mV / V	2.85 ± 0.015	
Max. number of load cell verification intervals (n _{LC})		-	3000
Min. load cell verification interval (v _{min})		-	E _{max} / 10000
Temperature effect on zero	%RO / 10°C	≤ 0.03	≤ 0.03
Temperature effect on sensitivity	%RO / 10°C	≤ 0.02	≤ 0.02
Combined error	%RO	≤ 0.1 / ≤ 0.2	≤ 0.1 / ≤ 0.2
Safe load limit	%E _{max}	150	
Ultimate load	%E _{max}	200	
Zero balance	%RO	≤ 1.0	
Creep error (30 minutes)	%RO	≤ 0.02	≤ 0.02
Excitation voltage, recommended	V (DC)	5 - 12	
Excitation voltage, maximum	V (DC)	15	
Input resistance	Ω	1450 ± 10	
Output resistance	Ω	1405 ± 3	
Insulation resistance (at 50 V DC)	MΩ	≥ 5000 (50 VDC)	
Compensated temperature range	°C	-10°C / +40°C.... 10°C / 150°C (HT model)	
Operating temperature range	°C	-30°C / +70°C.... -30°C / 200°C (HT model)	
ATEX Approval (Optional)		ATEX  II 1G Ex ia IIC T6 Ga II 1D Ex ia IIC T82°C Da	
Material		Nickel plated alloy steel	Stainless steel
Protection class		IP68	
Cable		Length: 8 meter (1-4.7 t), 12 meter (10 t - 33 t) 16 meter (47 t- 330 t), Diameter: 6mm	

HT* indicates high temperature type

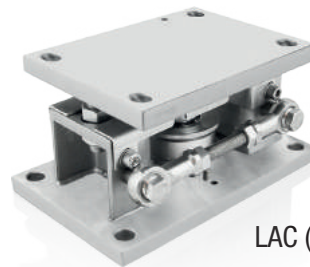
Dimensions (mm)



Color Codes

Function	Colors
+ excitation	blue
- excitation	black
+ signal	white
- signal	red
shield	yellow

W Modules



LAC (Up to 47 ton)