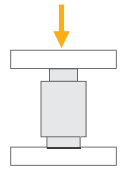


BR016 / BR016S

Compression Load Cell



Applications



Explosive Atmospheres



Truck Scales



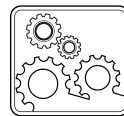
Tank, Bunker, Silo Weighing



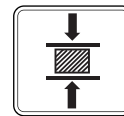
High Capacity Applications



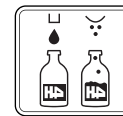
Special Weighing



Industrial Processes



Testing Machines



Packing & Filling Applications


Key Features

- Capacities: 10~50 t
- Nickel plated alloy steel / Stainless steel
- OIML R60 C3 approved
- ATEX approved (optional)
Zone 0, 1, 2, 20, 21, 22
- Protection class: IP68

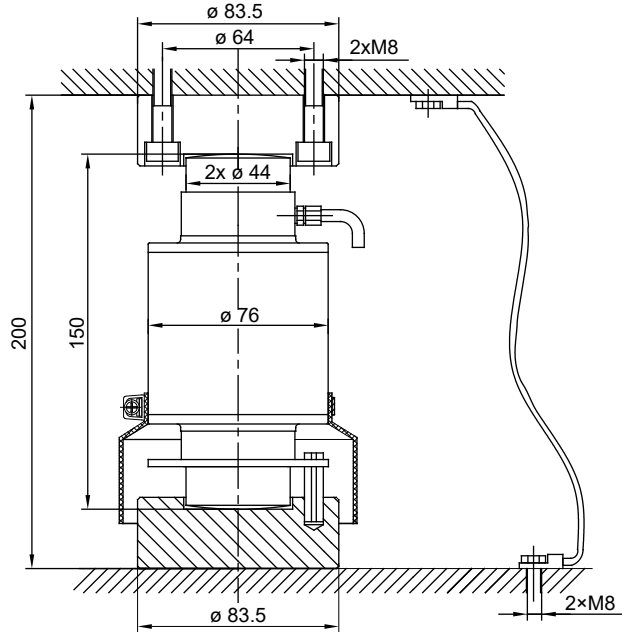
BR016 is a high performance fully welded compression type load cell. It perfect fits for use in high capacity weighing systems such as truck scales, axle scales, heavy capacity floor scales, tank scales, ship weighing and other heavy capacity industrial applications. BR016 is supplied with Rockwell 44 hardened upper and lower receivers as standard.

ATEX approved BR016 load cell is suitable for use in explosive environments.

Technical Specifications

Model		BR016	BR01S6
Capacity (E_{max})	t	10 / 15 / 20 / 25 / 30 / 40 / 50	
Accuracy class according to OIML R60		C3	
Rated output (RO)	mV / V	2.0 ± 0.002	
Max. number of load cell verification intervals (n_{LC})		3000	
Minimum load cell verification interval (v_{min})		$E_{max} / 10000$	
Temperature effect on zero	%RO / 10°C	≤ 0.012	
Temperature effect on sensitivity	%RO / 10°C	≤ 0.015	
Combined error	%RO	≤ 0.017	
Safe load limit	% E_{max}	150	
Ultimate load	% E_{max}	200	
Zero balance	%RO	≤ 1.0	
Kayma hatası (30 dakika)	%RO	≤ 0.017	
Besleme voltajı (önerilen)	V (DC)	5 - 12	
Besleme voltajı (maksimum)	V (DC)	15	
Input resistance	Ω	700 ± 10	
Output resistance	Ω	700 ± 10	
Insulation resistance (at 50 V DC)	M Ω	≥ 5000	
Compensated temperature range	°C	- 10...+ 40	
Operating temperature range	°C	- 35...+ 65	
ATEX Approval (Optional)		ATEX  II 1G Ex ia IIC T6 Ga II 1D Ex ia IIIC T82°C Da	
Material		Nickel plated alloy steel	Stainless steel
Protection class		IP68	
Cable		Length: 8 meter (10 t), 10 meter (15 t), 12 meter (20 t,25 t), 14 meter (30 t), 16 meter (40 t,50 t) Diameter: 5mm	

Dimensions (mm)



Color Codes

Function	Colors
+ excitation	blue
- excitation	black
+ signal	white
- signal	red
shield	yellow