



### Fotocelle cilindriche M18 a riflessione polarizzata con catarifrangente M18 cylindrical polarized reflex type with rear reflector

- **Diametri 18 mm**  
18 mm diameters
- **Custodia plastica o metallica**  
Plastic or Metal housing
- **Portate: 2000 mm**  
Sensing distance: 2000 mm
- **Versioni con portata regolabile R**  
Versions R with sensing distance adjustable
- **Versioni con ottica assiale**  
Assial optical versions
- **Versioni con uscita cavo e connettore M12**  
Cable and M12 connector output
- **Versioni a 3 fili PNP - NPN NO e NO/NC**  
PNP - NPN - 3-wire NO and NO/NC version

#### Caratteristiche - Features

|  |  | M18                                    |
|--|--|--|
| Diametro sensore / Sensor diameter                 |  | IR MODULATO 880 nm / PULSED IR 880 nm  |
| Emissione / Emission                               |  | 10 ÷ 30 Vcc / Vdc                      |
| Tensione di alimentazione / Power supply           |  | 150 Hz                                 |
| Frequenza di commutazione / Switching frequency    |  | < 25 mA                                |
| Assorbimento / Power consumption                   |  | 250 mA                                 |
| Carico massimo / Maximum load                      |  | < 2 V @ 250 mA                         |
| Caduta di tensione / Voltage drop                  |  | -25°C ÷ +70°C                          |
| Temperatura di funzionamento / Working temperature |  | IP65                                   |
| Grado di protezione / IP rating                    |  | OTTONE NICHELATO / NICKEL PLATED BRASS |
| Custodia metallica / Metal housing                 |  | ABS                                    |
| Custodia plastica / Plastic housing                |  | PMMA                                   |
| Materiale lenti / Lenses material                  |  |  |

#### Riferimenti collegamento con cavo L = 2 m Versione PNP / References with cable L = 2 m PNP Version

| Custodia Housing   | Dimensioni Dimensions |       | Distanza d'intervento Sensing distance | PNP - NO                     | PNP NO / NC                  |  |  |
|--------------------|-----------------------|-------|--|------------------------------|------------------------------|--|--|
|                    | A                     | B     |  |                              |                              |  |  |
| Plastica / Plastic | 70 mm                 | 55 mm | 2000 mm                                | OCV81P/CPNO <sup>(1)</sup>   | OCV81P/CPSC <sup>(1)</sup>   |  |  |
| Metallica / Metal  | 70 mm                 | 55 mm | 2000 mm                                | OCV81P/CPNOM <sup>(1)</sup>  | OCV81P/CPSCM <sup>(1)</sup>  |  |  |
| Metallica / Metal  | 70 mm                 | 55 mm | 50 ÷ 2000 mm                           | OCV81P/CPNORM <sup>(1)</sup> | OCV81P/CPSCRM <sup>(1)</sup> |  |  |

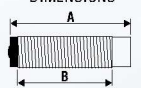
#### Riferimenti con collegamento con connettore M12 Versione PNP / References with M12 connector PNP Version

| Custodia Housing   | Dimensioni Dimensions |       | Distanza d'intervento Sensing distance | PNP - NO                       | PNP NO / NC                   |  |  |
|--------------------|-----------------------|-------|--|--------------------------------|-------------------------------|--|--|
|                    | A                     | B     |  |                                |                               |  |  |
| Plastica / Plastic | 79 mm                 | 55 mm | 2000 mm                                | OCV81P/CPNOC5 <sup>(1)</sup>   | OCV81P/CPSCC5 <sup>(1)</sup>  |  |  |
| Metallica / Metal  | 79 mm                 | 55 mm | 2000 mm                                | OCV81P/CPNOMC5 <sup>(1)</sup>  | OCV81P/CPSCMC5 <sup>(1)</sup> |  |  |
| Metallica / Metal  | 82 mm                 | 55 mm | 50 ÷ 2000 mm                           | OCV81P/CPNORMC5 <sup>(1)</sup> | OCV81P/CPSCRC5 <sup>(1)</sup> |  |  |

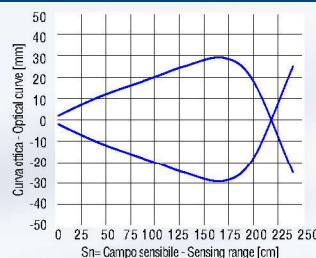
(1) - Versione NPN sostituire la "P" con la "N" / Replace "P" with "N" for NPN version

Per maggiori informazioni consultare il datasheet "ocv81pc.pdf" presente sul sito web: [www.selet.it](http://www.selet.it) / For more information see datasheet "ocv81pc.pdf" on this web site: [www.selet.it](http://www.selet.it)

DIMENSIONI DIMENSIONS



#### Curve ottiche - Optical curves



#### Collegamenti - Connections

