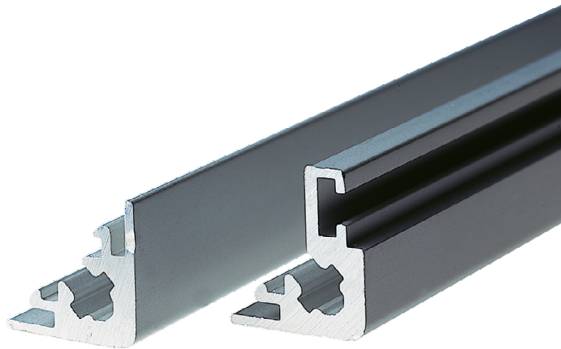


# Data Sheet for Aluminium Housing

## Electronics aluminium bar profile

## Series STP



Profile K

Profile G

The STP aluminium bar profiles that can be combined with each other are designed for self-assembly of individual aluminium housings. With the corresponding covers and end plates, housings can be designed in various dimensions. The bar profiles are available as yard goods (max. 3000 mm). We cut them to the desired lengths. Optionally we offer the possibility of a complete housing. The surface of the profiles is anodized aluminium (optional black anodized). The bar profiles have grooves for mounting the covers with max. 1.6 mm material thickness.

**For profile K:** Insert the aluminium covers into the groove and fix the end plates with screws M5x20.

**For profile G:** Insert the aluminium covers into the grooves, screw the side parts with screws (M3x4) and nuts M3, screw the end plates with the profiles (M5x20).

Data Profile	K	G
External dimension height	16 mm	18 mm
External dimension width	16 mm	
T groove	no	yes
Material	ALMgSi 0,5 F22	
Material thickness	1,2 mm	
Colour	Aluminium nature anodised (optional black anodised)	
Mass ca.	0,26 kg/m	0,29 kg/m

Mounting Cover and End Plates	K	G
Feed for screws end plates	M5	
Feed for cover	max. 1,6 mm	
T groove feed	-	Nut and screw M3
Mounting parts	Not included	

# Data Sheet for Aluminium Housing

## Electronics aluminium bar profile

Series STP

### Order Code bar profile

Description	Selection: standard=black/bold, possible options=grey/cursive						
<b>Series:</b>	<b>STP</b>						
<b>Profile design:</b>							
<b>Profile K</b>		<b>K</b>					
<b>Profile G</b>		<b>G</b>					
<b>Profile lenght:</b>							
<b>1000 mm</b>			<b>1000</b>				
<i>Option custom length* &lt;3000 mm</i>			<i>XXXX</i>				
<b>Profile colour:</b>							
<b>Aluminium nature anodised</b>				<b>A</b>			
<i>Option aluminium black anodised</i>				<i>N</i>			

\* Minimum order quantity ≥100 pieces (= 25 housings)

### Order Code side panels

Description	Selection: standard=black/bold, possible options=grey/cursive				
<b>Side panels (depth 1,5 mm):</b>					
<b>89 x 1000 mm</b>	<b>89 x 1000</b>				
<b>100 x 250 mm</b>	<b>100 x 250</b>				
<b>250 x 250 mm</b>	<b>250 x 250</b>				
<b>250 x 500 mm</b>	<b>250 x 500</b>				
<i>Option custom dimensions* &lt;3000 mm</i>	<i>... X ...</i>				
<b>Profile colour:</b>					
<b>Aluminium nature anodised</b>		<b>A</b>			

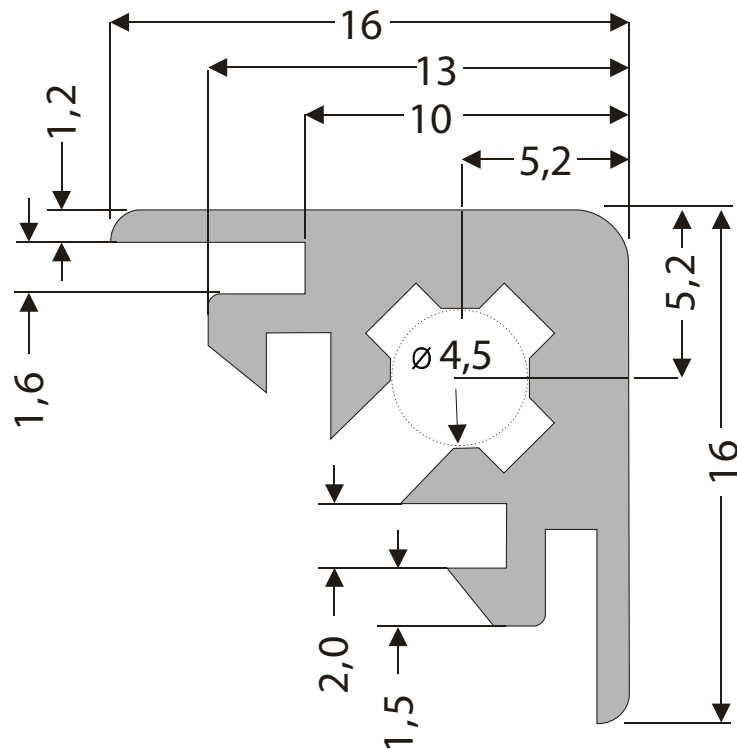
\* Minimum order quantity ≥100 pieces (= 25 housings)

### For higher quantities or on-going demand, additional options are available as described below on request

For Example: Processing of the housings such as drilling, punching, milling etc. as well as printing, customer-specific colours according to customer requirements. Customized processing of end plates, other thicknesses and materials. Chromate the bare housing and plates and more.

## Drawing

## Profile K



## Profile G

