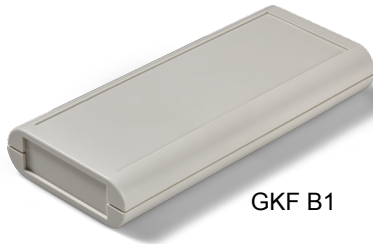


Data sheet for Plastic Housing

Electronics plastic housing

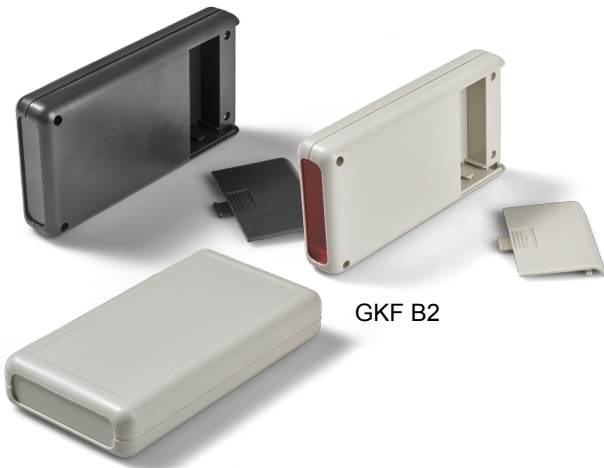
Series GKF



GKF B1

Plastic hand-held housing GKF B1

The hand-held plastic small housing made of impact-resistant ABS is equipped with two end plates and has internal mounting possibilities for horizontal PCB mounting. The light gray plastic housing with dimensions 77 x 25 x 172 mm (W x H x L) is used as a control unit or as a peripheral device.



GKF B2

Plastic hand-held housing GKF B2

The GKF B2 housing for remote controls has a battery compartment (without battery holder) for AA batteries. It is available in the colors light gray and black in impact resistant ABS with the size 70 x 24 x 135 mm (W x H x L). For the transmission of infrared signals, the variant with transparent red front panel made of polycarbonate is suitable.

Data Housing	GKF B1	GKF B2
Material	ABS	
Colour	Light grey	Light grey, black
End plates	2	1
Battery compartment	Without	With battery compartment for AA-batteries (without battery holder)
External dimensions W x H x L	77 x 25 x 172 mm	70 x 24 x 135 mm

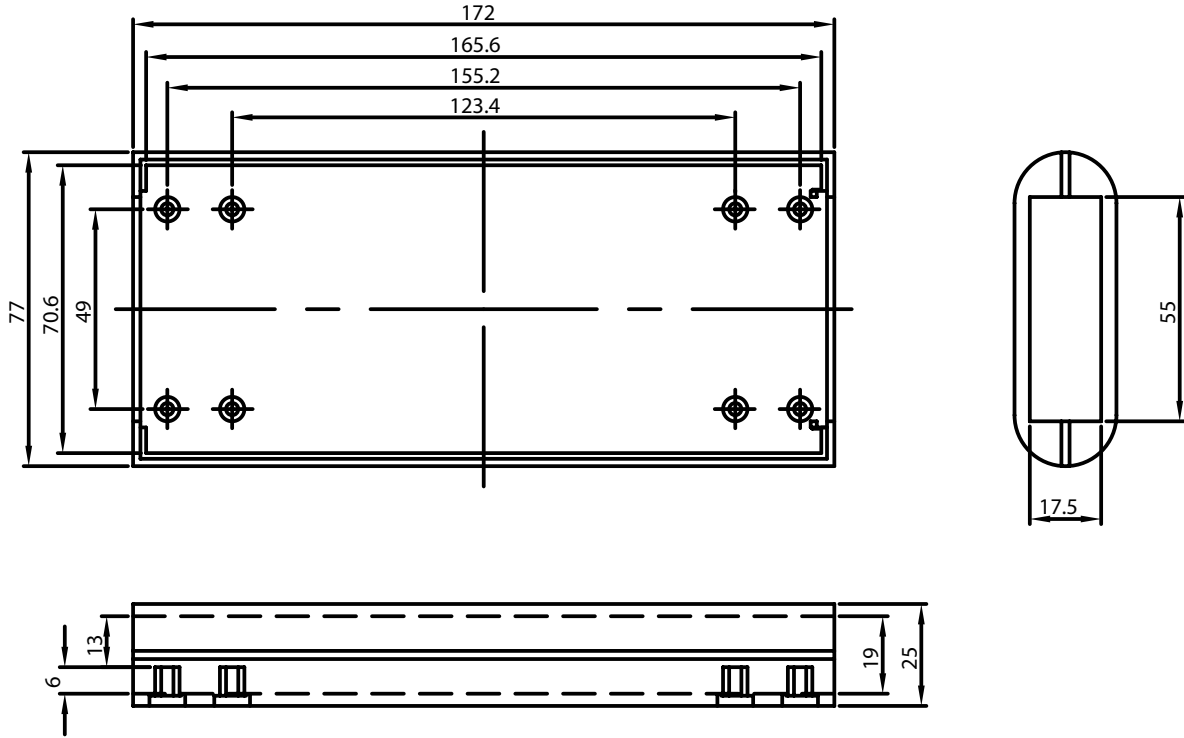
Order Code				
Description	Selection: standard=black/bold, possible options=grey/cursive			
Series:	GKF			
External housing dimensions W x H x L: 77 x 25 x 172 mm 70 x 24 x 135 mm		B1 B2		
Colour: Light grey Black (only B2)			G B	
End plates: Like housing Transparent red of polycarbonate (only B2)				- TR

Data sheet for Plastic Housing

Electronics plastic housing

Series GKF

Drawing GKF B1



Drawing GKF B2

